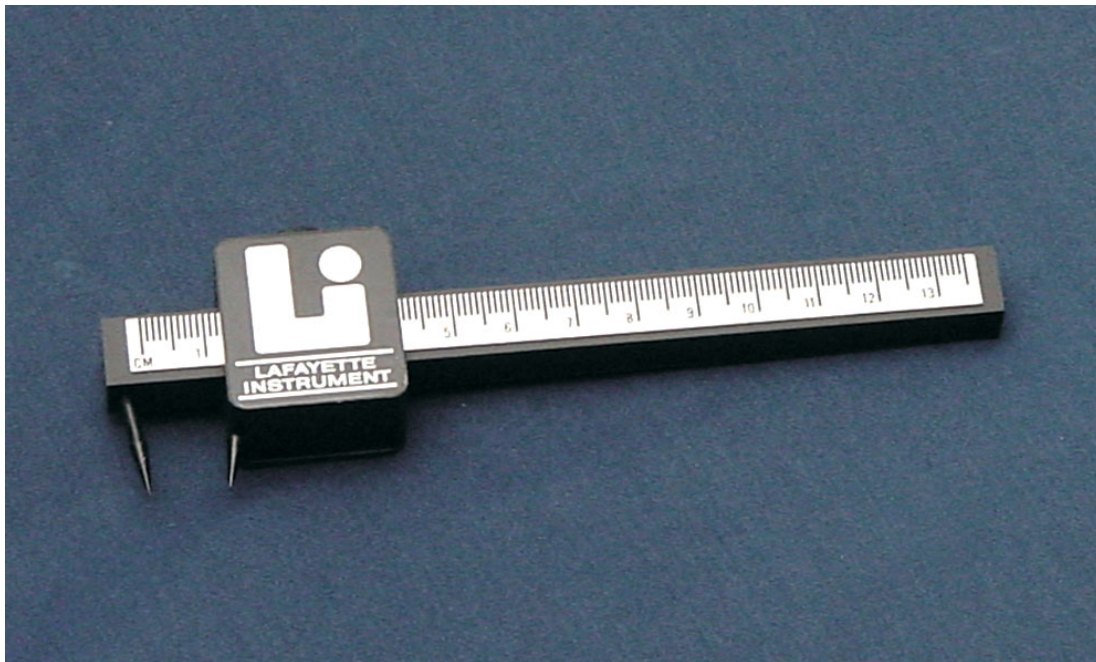


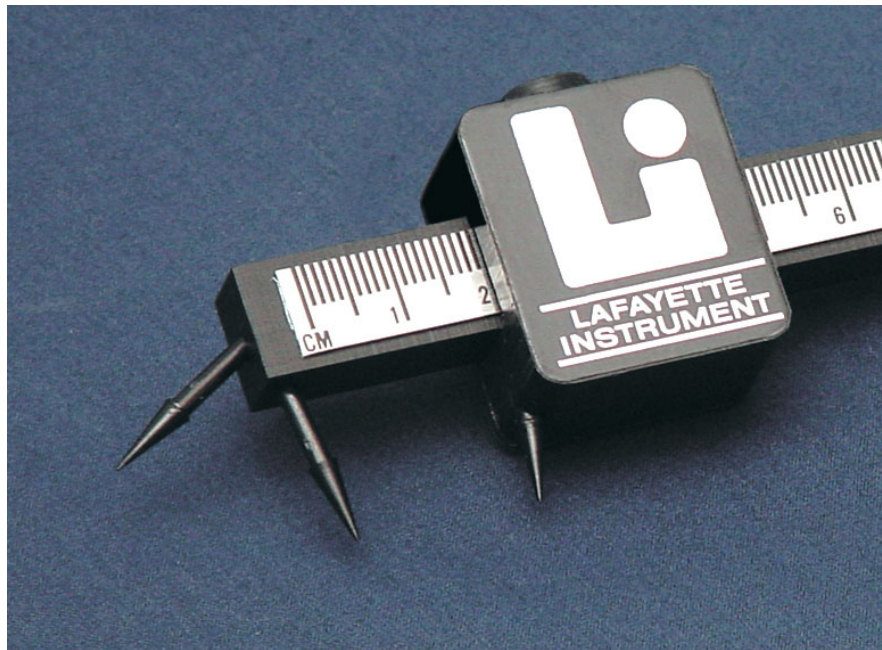
# AESTHESIOMETERS USER INSTRUCTIONS



3700 Sagamore Parkway North  
P.O. Box 5729 • Lafayette, IN 47903 USA  
Tel: 765.423.1505 • 800.428.7545  
Fax: 765.423.4111  
E-mail: [info@lafayetteinstrument.com](mailto:info@lafayetteinstrument.com)  
[www.lafayetteinstrument.com](http://www.lafayetteinstrument.com)

## *Table of Contents:*

<b>System Description</b>	<b>3</b>
<b>Operation</b>	<b>3</b>
<b>Ordering Information</b>	<b>4</b>



Model 16012

## ***DESCRIPTION:***

The Model 16011 Aesthesiometer is a basic sensory device designed to measure a subject's perception of the cutaneous two-point threshold. The unit is designed with calibrated Vernier construction for accurate measurements and strong brass tips insulated with a coating of vinyl to minimize the influence of temperature on touch and/or pain thresholds. In addition, the Model 16012 incorporates a single third point adding to the flexibility of the unit since it is now possible to alternate between single and double point stimulation without changing the vernier setting.

## ***OPERATION:***

1. Blindfold the subject and set the two points of the Aesthesiometer close together.
2. Both points are touched to the skin simultaneously and the subject is requested to report whether he feels one or two points.
3. The separation of the points should be gradually made larger until the subject reports two points. (As a check, only one point should be touched on some trials either by separating the Model 16011 points so that only one can be used or by using the convenient third point of the Model 16012.)
4. The distance separating the points can be read directly from the calibrated scale on the Aesthesiometer, giving an accurate measure of the subject's two point threshold based on his reported sensations.

When different areas of the skin are tested in this manner, it will be found that the two point thresholds differed markedly. For example, the threshold is very small on the tip of the tongue and quite large on the upper arm and parts of the back.

If the procedure is repeated a number of times on the same subject using the same skin area, it will be found that the distance separating the two points become smaller and smaller, indicating an increase in sensitivity brought about by practice.

Transfer effects can be studied by giving the subject one or two trials on one arm to determine the threshold there, then giving him a large number of trials on the corresponding area of the other arm, and then again determining his threshold on the first arm. It will be found that there is a large increase in sensitivity in the first arm, even though there was no practice there, brought about by the transfer effect from the second arm.

# Lafayette Instrument Aesthesiometers

## Models 16011 & 16012 User's Manual

### Ordering Information:

All phone orders must be accompanied by a hard copy of your order. All must include the following information:

- 1) Complete billing and shipping addresses
- 2) Name and department of end user
- 3) Model number and description of desired item(s)
- 4) Quantity of each item desired
- 5) Purchase order number or method of payment
- 6) Telephone number

#### DOMESTIC TERMS

There is a \$50 minimum order. Open accounts can be extended to most recognized educational institutions, hospitals and government agencies. Net amount due 30 days from the date of shipment. Enclose payment with the order; charge with VISA, MasterCard; or pay COD. We must have a hard copy of your order by mail or fax. Students, individuals and private companies may call for a credit application.

#### INTERNATIONAL PAYMENT INFORMATION

There is a \$50 minimum order. Payment must be made in advance by: draft drawn on a major US bank; wire transfer to our account; charge with VISA, MasterCard; or confirmed irrevocable letter of credit. Proforma invoices will be provided upon request.

#### RETURNS

Equipment may not be returned without first receiving a Return Goods Authorization Number (RGA).

When returning equipment for service, please call Lafayette Instrument to receive a RGA number. Your RGA number will be good for 30 days. Address the shipment to: Lafayette Instrument Company, 3700 Sagamore Parkway North, Lafayette, IN 47904, U.S.A. Shipments cannot be received at the PO Box. The items should be packed well, insured for full

value, and returned along with a cover letter explaining the malfunction. Please also state the name of the Lafayette Instrument representative authorizing the return. An estimate of repair will be given prior to completion **ONLY** if requested in your enclosed cover letter. We must have a hard copy of your purchase order by mail or fax, or repair work cannot commence.

#### WARRANTY

Lafayette Instrument guarantees its equipment against all defects in materials and workmanship to the ORIGINAL PURCHASER for a period of one (1) year from the date of shipment, unless otherwise stated. During this period, Lafayette Instrument will repair or replace, at its option, any equipment found to be defective in materials or workmanship. If a problem arises, please contact our office for prior authorization before returning the item. This warranty does not extend to damaged equipment resulting from alteration, misuse, negligence or abuse, normal wear or accident. In no event shall Lafayette Instrument be liable for incidental or consequential damages. There are no implied warranties or merchantability of fitness for a particular use, or of any other nature. Warranty period for repairs or used equipment purchased from Lafayette Instrument is 90 days.

#### DAMAGED GOODS

Damaged equipment should not be returned to Lafayette Instrument prior to thorough inspection.

When a shipment arrives damaged, note damage on delivery bill and have the driver sign it to acknowledge the damage. Contact the delivery service, and they will file an insurance claim. When damage is not detected at the time of delivery, contact the carrier and request an inspection within 10 days of the original delivery. Please call the Lafayette Instrument Customer Service Department for a return authorization for repair or replacement of the damaged merchandise.



3700 Sagamore Parkway North  
P.O. Box 5729 • Lafayette, IN 47903 USA  
Tel: 765.423.1505 • 800.428.7545  
Fax: 765.423.4111  
E-mail: [lic@lafayetteinstrument.com](mailto:lic@lafayetteinstrument.com)  
[www.lafayetteinstrument.com](http://www.lafayetteinstrument.com)

**Lafayette Instrument Co. Europe**  
4 Park Road, Sileby,  
Loughborough, Leics., LE12 7TJ. UK.  
Tel: +44 (0)1509 817700  
Fax: +44 (0)1509 817701  
E-mail: [EUsales@lafayetteinstrument.com](mailto:EUsales@lafayetteinstrument.com)